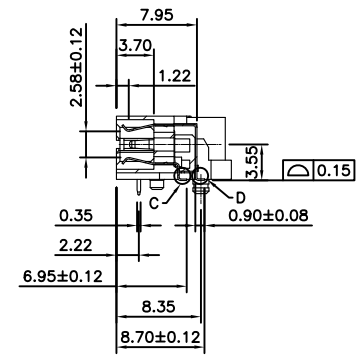
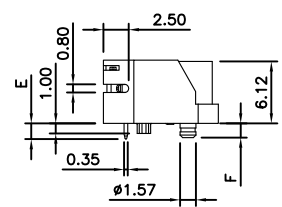
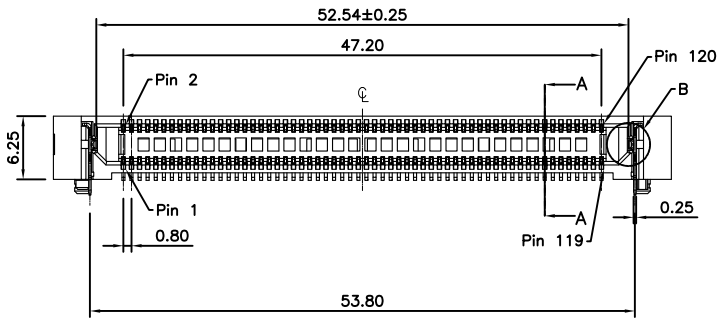
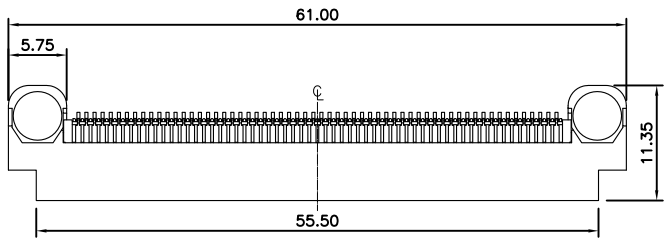
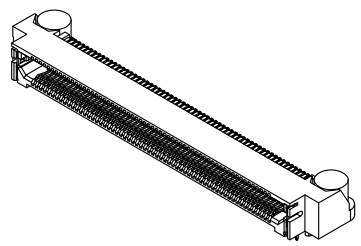


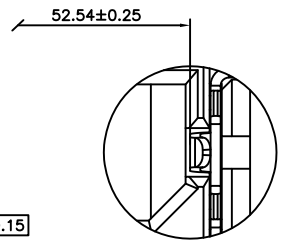
REV.	SPECIFICATION	ECN NO.	APPD.
X3			

Material and Plating:
Housing: LCP, UL94V-0, Black.
Contacts: Phosphor Bronze
Gold Plated on Contact Area and 80u" Min
Tin Plated on Solder Tail over nickel 50u" Min .
Counterweight: Brass
Latches: Phosphor Bronze

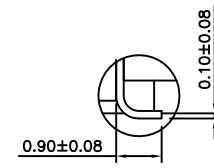
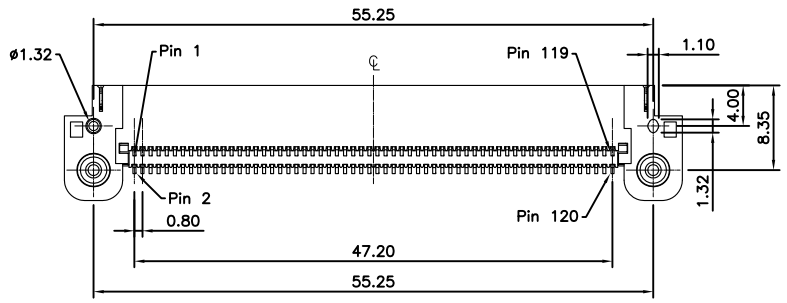
Electrical Characteristics:
Current Rating: 1.4 AMP.
Dielectric Withstanding Voltage: AC 900V.
Insulation Resistance: 50000MΩ min.
Contact Resistance: 25mΩ max.
Operating Temperature: -55°C~+125°C.
***RoHS Compliant**



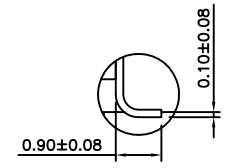
Section A-A



Detail B
Scale 4:1



Detail C
Scale 5:1



Detail D
Scale 5:1

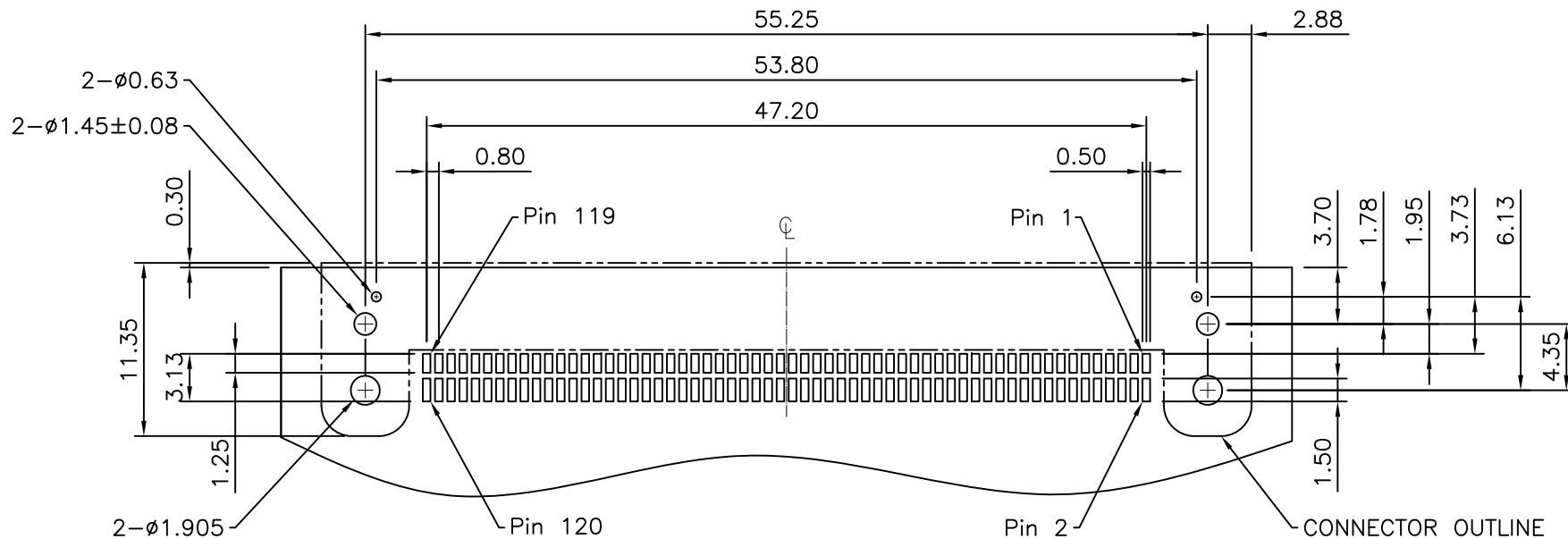
- Series 2386- 4 2 X 60 C 3 D 1 M N G T - x
- 4:Female Right Angle
- Double Row
- Position Per Row
- C: Selective Gold Plated
- 3: 10u"
- 7: 30u"
- D:SMD Type
- Code1-2
- M: Metal Post
- N: W/O Lock
- L: With lock
- G: With Extended Guide Post
- Blank: W/O Extended Guide Post
- Blank: W/O Mylar
- S: Mylar
- T: Tape&Reel Package

PCB Thickness	Code	Lock	Metal Post
Dimension		E	F
1.58	1	1.55	1.40
2.36	2	2.34	2.19

Tolerances	Dwg No.	2386-D0000-004	Title:
x = ±0.50	Projection		2386 Series
.x = ±0.25	Unit	mm	Female Right Angle
.xx = ±0.15	Scale	1:1	
	Drawn By	WP 02/18'19	

OUPIN
OUPIN ELECTRONIC(KUNSHAN) CO., LTD.
P/N: 2386-42X60C3D1MNGT-x
SHEET 1/2 Ver.No. X3

REV.	SPECIFICATION	ECN NO.	APPD.
X3			



Recommended PCB Layout
(Tolerance: ±0.05)

Tolerances	Dwg No.	2386-D0000-004		Title:	
x = ±0.50	Projection			2386 Series Female Right Angle	
.x = ±0.25	Unit	mm	Scale		1:1
.xx = ±0.15	Drawn By	WP 02/18'19			

Title:			
2386 Series			
Female Right Angle			

OUPIN ELECTRONIC(KUNSHAN) CO., LTD.			
P/N: 2386-42X60C3D1MNGT-x			
SHEET	2/2	Ver.No.	X3